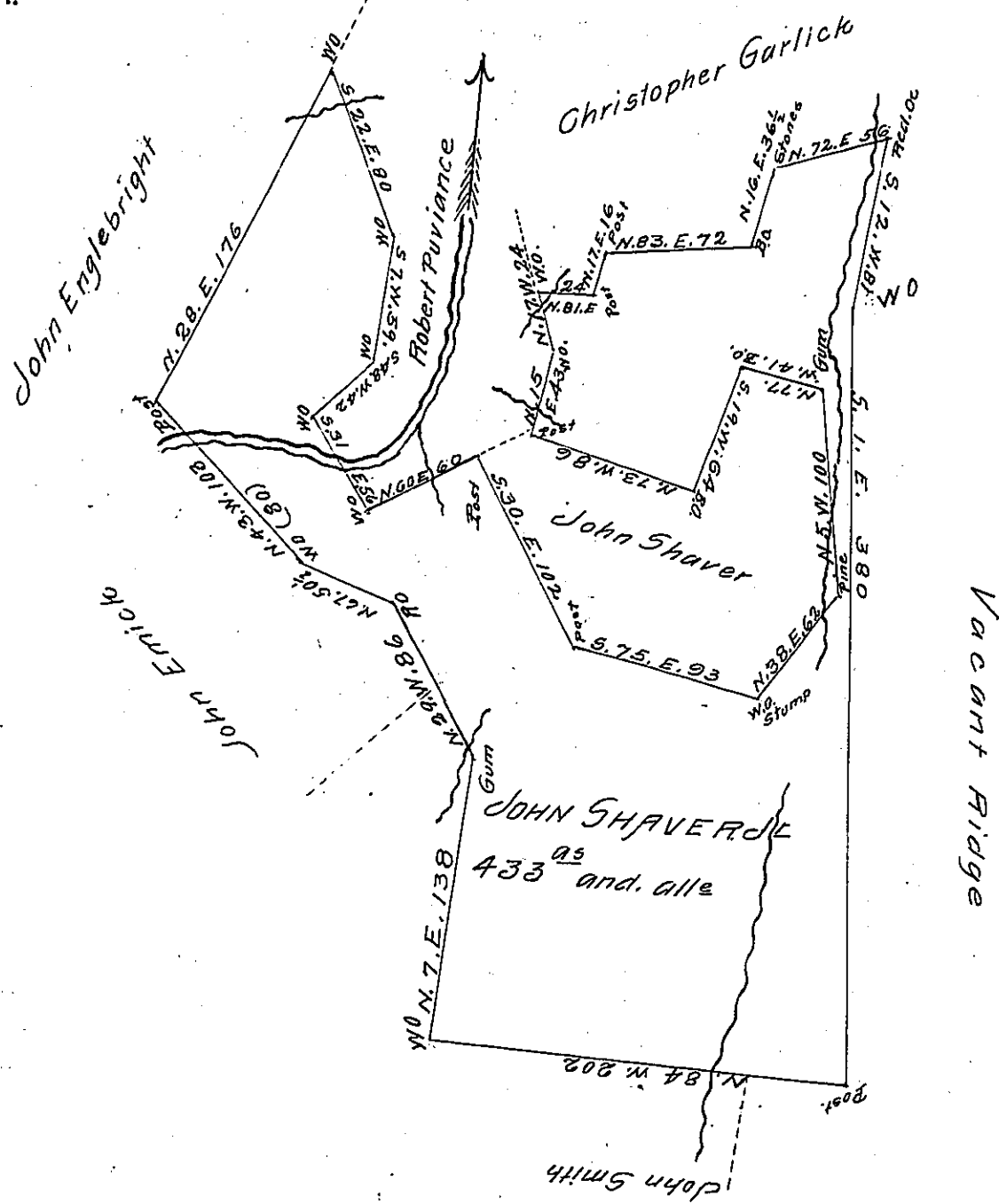


FORM No 1.



Situate on the waters of Brush Creek in Providence and South-  
 amptons (late Providence and Colerain) Townships Bedford  
 County. Surveyed the 15<sup>th</sup> day of ~~May~~<sup>April</sup> 1818 in pursuance of of  
 a Warrant for 400 acres dated the 1<sup>st</sup> day of August 1794

James Piper D.S.

To Jacob Spangler Esq  
 Surveyor General.

IN TESTIMONY that the above is a copy of the original remaining on file in  
 the Department of Internal Affairs of Pennsylvania, made  
 conformably to an Act of Assembly approved the 16th day of  
 February, 1833, I have hereunto set my Hand and caused  
 the Seal of said Department to be affixed at Harrisburg,  
 this fourteenth day of February 1907

*Isaac B. Brown*  
 Secretary of Internal Affairs.